

# VFC Series Fuel Control Valves

## 1 OVERVIEW

GAC control valve solutions include integrated, combined, and custom solutions tailored to your needs. The VFC Series Inline Stepper Fuel Control Valves work with a GAC ATB or other throttle body to adjust the air to fuel ratio to the engine to regulate the air-to-fuel ratio. The VFC fittings do not include a mixer and are intended for use with GAC MX Series or other mixers including diaphragm type mixers (Impco).

Optimum performance and emissions control have been demonstrated with [GAC's Fuel and Ignition Management Systems \(FIMS\)](#).




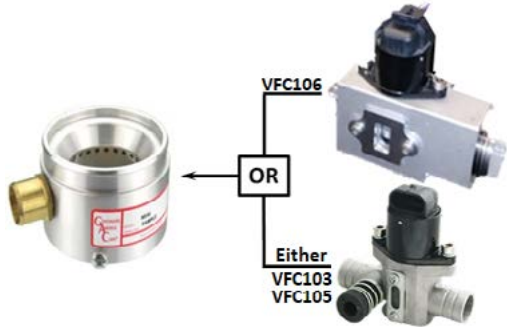
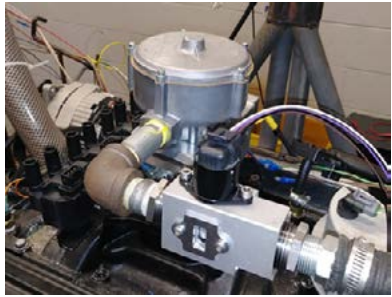
## 2 SPECIFICATIONS

ELECTRICAL POWER INPUT		PHYSICAL DIMENSIONS	
Operating Voltage	12 VDC	VFC103	Inline Stepper Fuel Control Valve - 5/8-inch (15.88mm) Hose Barb
ENVIRONMENTAL		VFC105	Inline Stepper Fuel Control Valve - 3/4-inch (19.05mm) Hose Barb
Operating Temperature	-40 to 248°F (-40 to 120°C)	VFC106	Inline Stepper Fuel Control Valve - 1-inch NPT (25.4mm)
Relative Humidity	Up to 100%	Weight	VFC103 0.44 lb (0.20 kg) VFC105 0.50 lb (0.23 kg) VFC106 0.60 lb (0.27 kg)

## 3 CONTROL VALVE SOLUTIONS

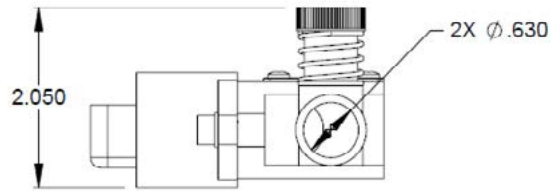
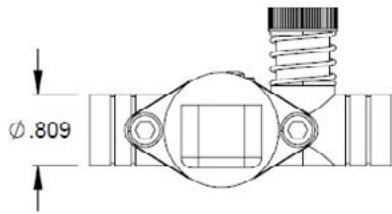
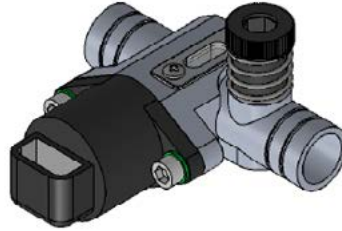
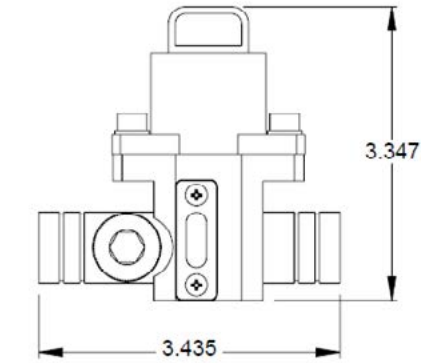
GAC offers three types of control valve solutions:

- ◆ Integrated gaseous Venturi mixer with a built in stepper motor
- ◆ Standalone Venturi mixers combined with standalone stepper motor controlled fuel control valves
- ◆ Individual solutions tailored to your needs

INTEGRATED SOLUTIONS	COMBINED SOLUTIONS	TAILORED SOLUTIONS
<p>Venturi Mixer with integrated stepper motor controlled fuel valve.</p> <p>All stepper motor controlled fuel valves operate with <a href="#">GAC AFR200 Series controllers</a>.</p>  <p>For more information on MXSB, MSMB, and MXLB integrated gaseous mixers see the MX_B mixers in the GAC solutions for <a href="#">Fuel and Ignition Management Systems</a>.</p>	<p>An MX Series standalone Venturi mixer paired with a VFC Series standalone stepper motor controlled fuel valve using either:</p> <ul style="list-style-type: none"> <li>• VFC106 (1-inch (25.4mm) NPT connection)</li> </ul> <p>or</p> <ul style="list-style-type: none"> <li>• VFC103 (5/8-inch (15.88mm) hose connections)</li> <li>• VFC105 (3/4-inch (19.05mm) hose connections)</li> </ul> 	<p>IMPACO Carburetors VFC106 paired with GAC:</p> <ul style="list-style-type: none"> <li>• AFR 200 Series controller</li> <li>• O2 sensor</li> <li>• MAP sensor</li> <li>• Speed sensor</li> <li>• Throttle body</li> </ul> 

## 4 CONTROL VALVE DIMENSIONS

### VFC103 and VFC 105



### VFC106

