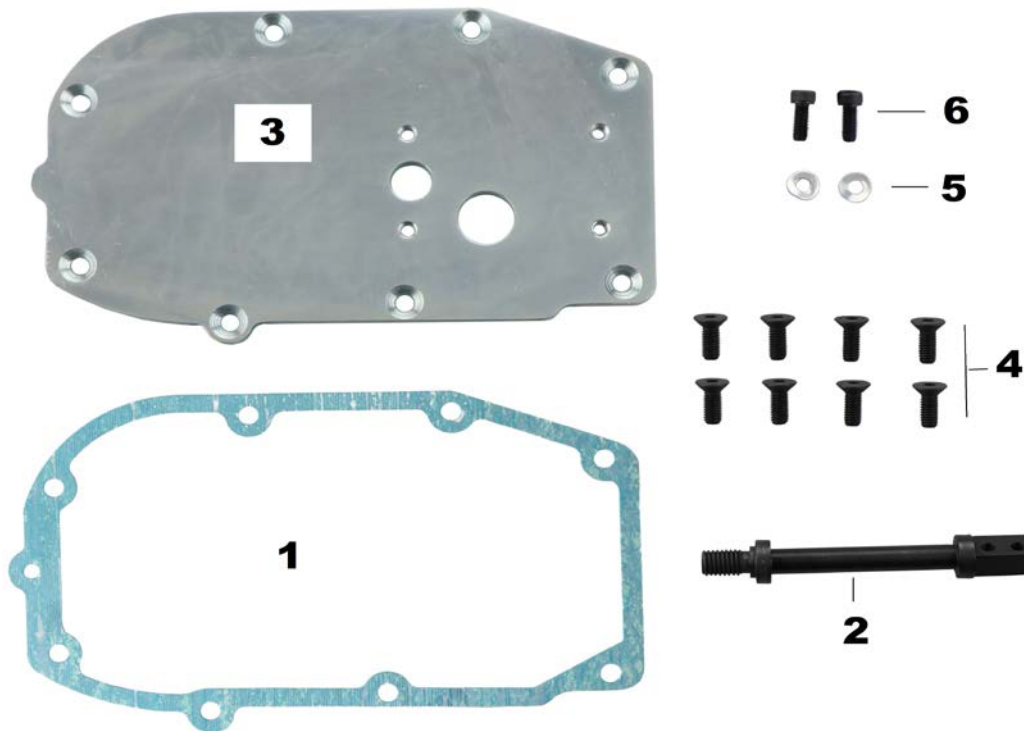


## 1 INTRODUCTION

The KT197 kit provides the necessary mounting plate, linkage, gasket and general hardware to replace a Bosch EDC Governor with GACs 175 Series Actuator.

## 2 KIT CONTENTS

The installation kit includes the following items:



ITEM	DESCRIPTION	GAC PN	QUANTITY
1	Gasket	GA209	1
2	Rack Link	LK108	1
3	Mounting Plate	PL254	1
4	Socket head cap screw, M6-1.0x16	HW05-565	8
5	Spring Washer, M5	HW05-615	2
6	Socket Head Cap Screw, M5x14	HW05-499	2

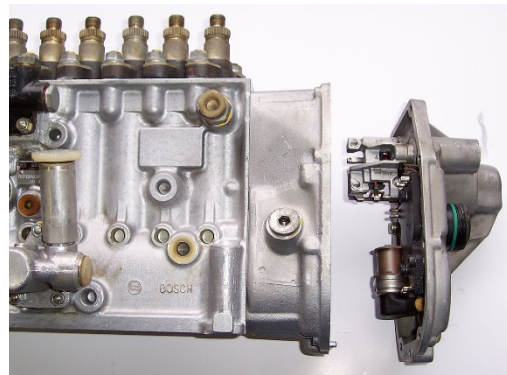
## 3 BEFORE YOU START

1. Disconnect the battery and cables. The engine should be cool.

3. Remove rear of governor housing. Remove the rear half of the governor housing



4. Remove the existing Governor housing and disconnect the actuator linkage from the fuel rack.

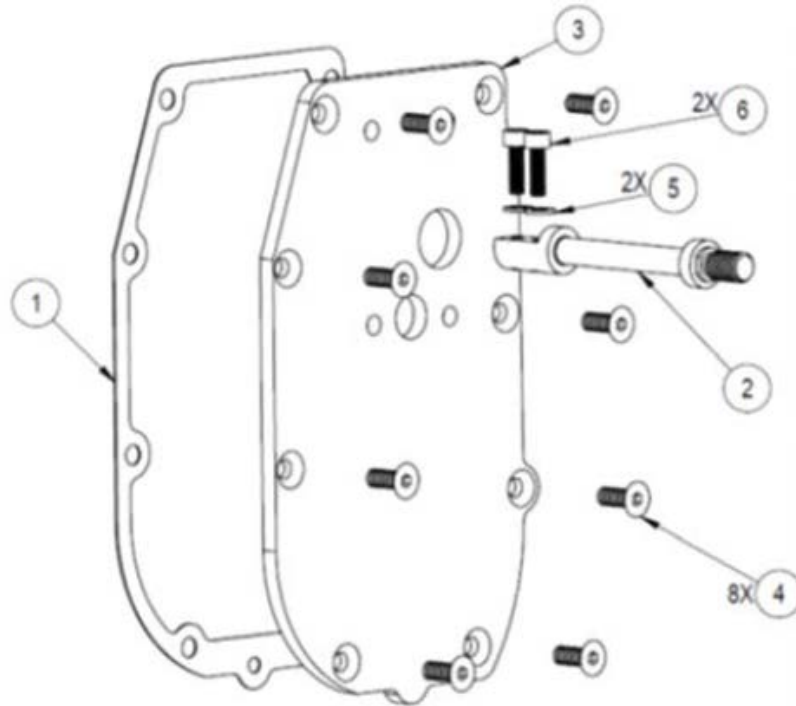


**NOTE:** The governor will release oil during removal.



## 4 INSTALLATION PROCEDURE

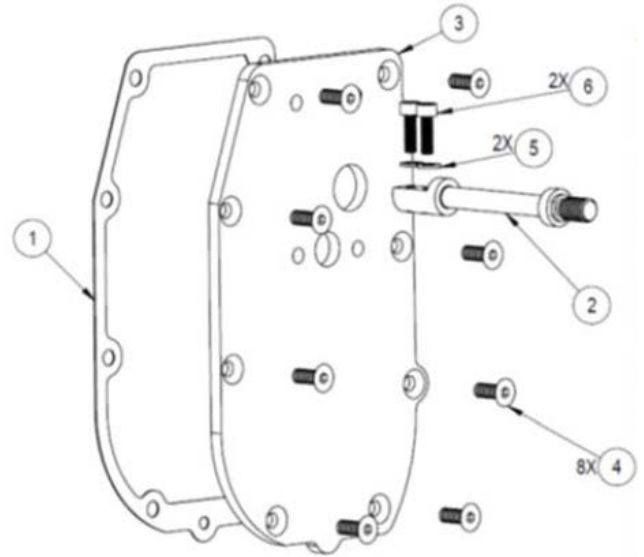
Using the following figure as a guide, note the numbering and placement order coincide with the following instructions.



1. Clean any grease or other materials from the surface of the housing and mounting screw holes.
2. Clean the exposed fuel rack and the fuel rack mounting holes.



- Using the KT197 kit, dry fit the gasket, (1), to the existing holes on the governor housing. Ensure the holes align with the gasket.



- Insert the rack link extension (2) into the fuel rack and line up extension mounting holes with the mounting holes in the fuel rack.
- Using the M5 spring washers (5) and cap screws (6), secure the extension to the fuel rack.
- Torque the cap screws to 27-33 in-lb [3-4 N m]. Make sure the rack moves freely in its bore through its full stop-to-stop travel.



**Do not remove the gasket tape all at one time.**

7. Removing the adhesive tape backing from the gasket, (1). in small sections, attach the gasket to the housing.
8. Install the adapter plate, (3), on the front of the housing. Ensure the plate is seated on the gasket and all holes align.
9. Hand tighten the 8 flathead hex screws, (4), on the plate.
10. Alternating at opposite sides on the plate, torque screws to 95-105 in-lb [10.5 - 12 N m].
11. Ensure the rack extension slides in and out freely with no friction or binding.



You are now ready to install the GAC 175 Series actuator. See the GAC 175 Series Installation Manual for details.